








28 450 845



- uscita doccetta 3/8"
- rosetta 60 x 78 mm
- ingresso 1/2"

Sistema di sicurezza antiriflusso.

| | | |
|---|-----------------------------|---------------|
|  | Cromato | 28 450 845-00 |
|  | Platinato spazzolato | 28 450 845-06 |
|  | Dark Chrome | 28 450 845-19 |
|  | Light Gold spazzolato | 28 450 845-27 |
|  | Nero opaco | 28 450 845-33 |
|  | Cromo spazzolato | 28 450 845-93 |
|  | Dark Platinum spazzolato | 28 450 845-99 |

Prodotti complementari



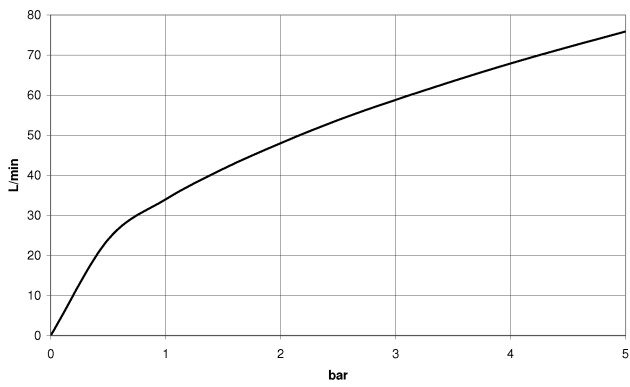
- raccordo angolare ad incasso - 35 085 970 90**
- Profondità d'incasso max. 163 mm
 - profondità d'incasso min. 90 mm

28 450 845

mm [inches]



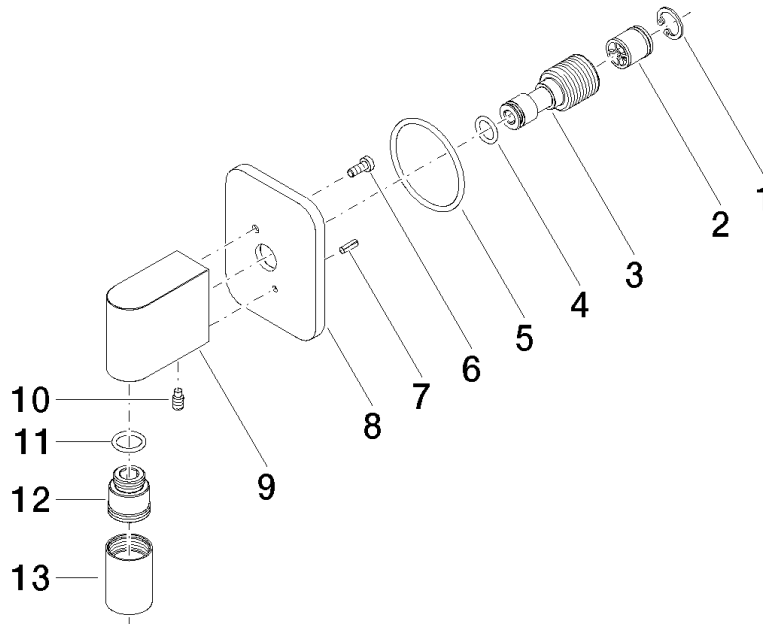
Diagramma di portata



Certificati

IAPMO_4976 (5). WRAS_2310091.

28 450 845



Elenco delle parti di ricambio

| N. | Codice articolo | Denominazione | Quantità necessaria | Tempo di produzione |
|----|--------------------|------------------------|---------------------|---------------------|
| 1 | 09 16 01 014 90 | anello | 1 | 2 |
| 2 | 90 23 01 141 00 90 | valvola di non ritorno | 1 | 2 |
| 3 | 09 24 03 116 20 90 | ugello | 1 | 2 |
| 4 | 09 14 10 008 90 | guarnizione | 1 | 2 |
| 5 | 09 14 10 142 90 | guarnizione | 1 | 2 |
| 6 | 09 30 30 054 90 | vite | 1 | 2 |
| 7 | 09 31 11 026 90 | perno | 1 | 2 |
| 8 | 09 27 84 021-00 | rosetta | 1 | 10 |
| 9 | 09 11 03 046-00 | attacco | 1 | 10 |
| 10 | 09 31 11 005 90 | perno | 1 | 2 |
| 11 | 90 14 10 077 00 90 | guarnizione | 1 | 2 |
| 12 | 09 24 03 107 20 90 | ugello | 1 | 2 |
| 13 | 90 21 02 069 00-00 | copertura | 1 | 10 |